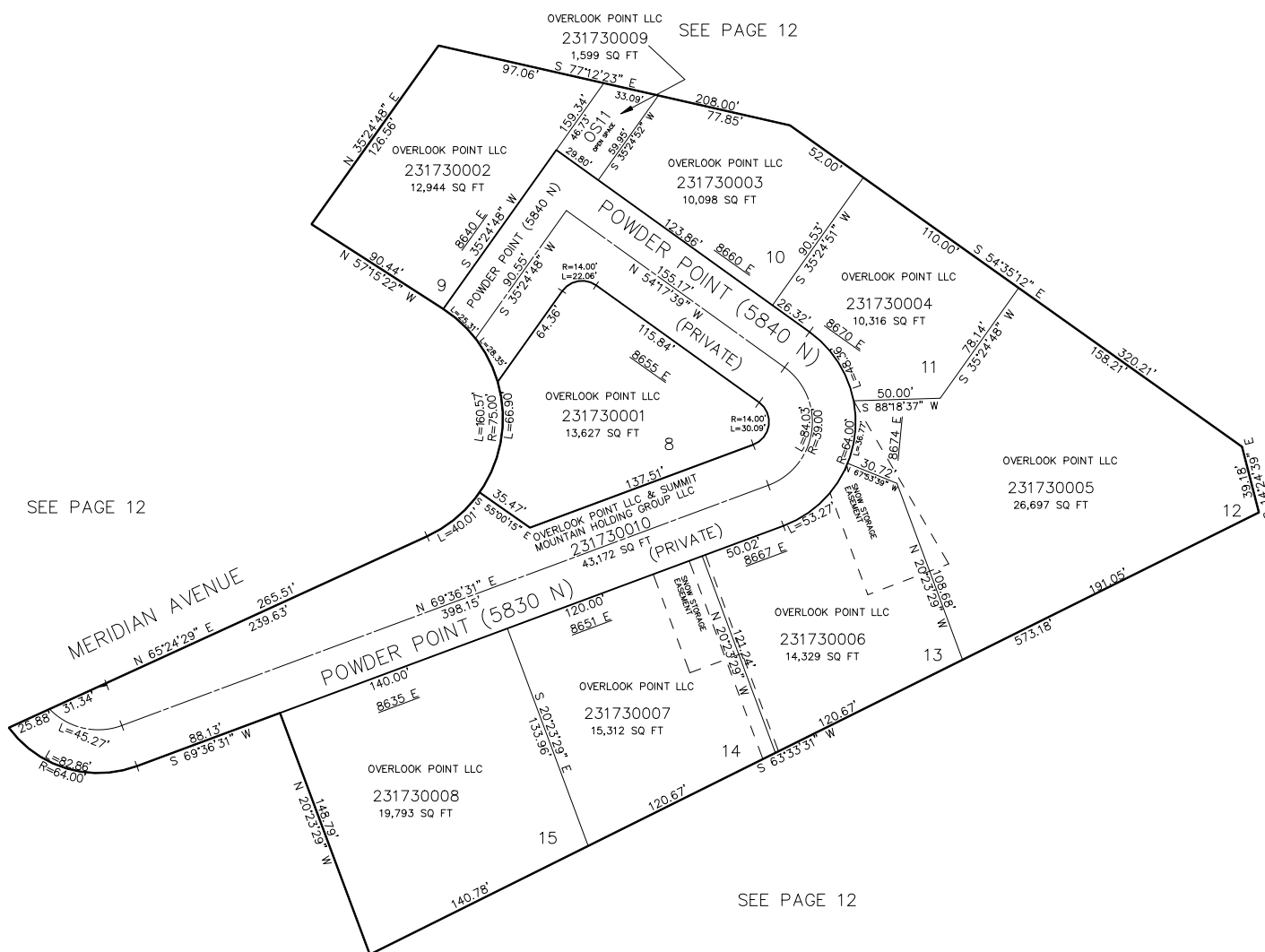


IN WEBER COUNTY

TAXING UNIT: 491

SCALE 1" = 50'



10' UTILITY & DRAINAGE EASEMENTS EACH
SIDE OF PROPERTY LINES AS INDICATED
BY DASHED LINES EXCEPT AS OTHERWISE
SHOWN.

FOR COMPLETE SURVEY DATA SEE
ORIGINAL DEDICATION PLAT IN
BOOK 97, PAGE 01 & 02 OF RECORDS.